



JFE Engineering Corporation

Company Profile

Name in Full :	JFE Engineering Corporation	Head Office:	Marunouchi Trust Tower North, 1-8-1, Marunouchi, Chiyoda-ku, Tokyo, 100-0005, Japan
Establishment :	8 th June 1912	Telephone:	+81-3-6212-0057 (Infrastructure-Overseas)
Capital :	10 Billion JPY	Telefax:	+81-3-6212-0067
President :	Hajime Oshita	E-mail:	kawashima-atsushi @jfe-eng.co.jp
Employees	10,000	Website:	http://www.jfe-eng.co.jp/en/
Clients	Government of Japan, Expressways Corporations, Foreign Government organizations Municipalities Railway Companies Energy and Power Companies Private Industry		

Providing Services

Steel Structure Construction	Steel Bridges, Flyovers, Marine Jackets, Landmark Structures
Energy Plant Construction	Pipelines, LNG terminal, TVR, Biomass power plants
Environment Plant Construction	Municipal Waste to Energy Plant, Water Plants
Industrial Machinery	Port Cranes, Heavy Material Handling System, Ballast Water Treatment

Project Achievement / Technical Expertise

For Infrastructure development of Kenya, we constructed pipelines and water plant at the time of NKK Corporation. And for urban development, we offer steel structures based on our "High-Standard" technologies and accumulated experiences.

We carry Steel Structure Design, Fabrication, Construction, Maintenance Services for Girder Bridges, Suspension Bridges, Cable Stay Bridges, Truss Bridges, Arch Bridges, Rigid Frame Bridges, Composite Deck Slab Bridges, Hybrid and Steel Caissons for Quays and Land reclamation, Jackets for Piers and Breakwaters, Hybrid Pontoons, Pedestrian Bridges, Flyovers



Variety types of Steel Structures, Crossing the sea, Across River, Elevation, Breakwater, Pier, and Reclamation

Egypt Suez Canal Bridge



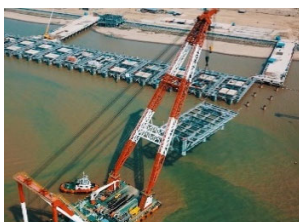
Singapore "Sky Park"



Features of Steel Structure

- = Robust & Long lasting
- = Economical
- = Swift Construction
- = Small foot print

Myanmar Thilawa Port Pier



Railway Fly Over Bridge in Mongolia



contact person

Mr. Atsushi Kawashima / Title: General Manager / E-mail: kawashima-atsushi@jfe-eng.co.jp